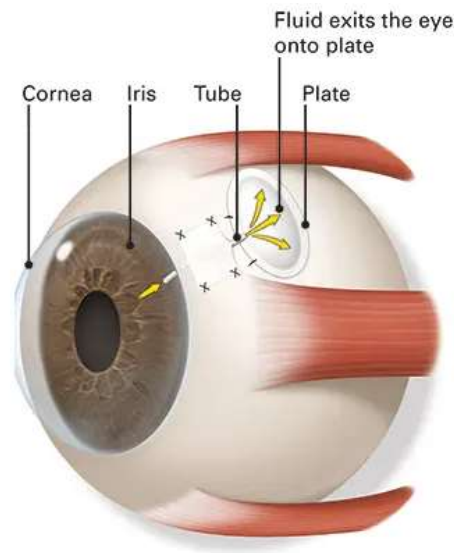


## Ahmed Tube Shunt for Glaucoma

In patients with glaucoma, the buildup of aqueous humor fluid (fluid that fills the space in front of the eyeball between the lens and cornea) can damage your vision over time. The Ahmed valve is a tiny device that is implanted into the eye to reduce pressure. It does this by draining the aqueous humor from inside the eye to a small plate behind the eyelid. Continuous draining of this fluid, keeps the pressure on the optic nerve to a minimum and can prevent further loss of vision.

Ahmed Tube Shunt surgery is recommended for patients who have experienced the following:

- Failed trabeculectomy surgery
- Glaucoma caused by diabetes or other neovascular diseases
- Glaucoma related to uveitis
- Trauma-induced glaucoma



Learn more about the risks, recovery and other expectations at:

<https://www.aao.org/eye-health/diseases/glaucoma-drainage-implants>

Feel free to ask your Abrams EyeCare surgery coordinator for surgery patient references.