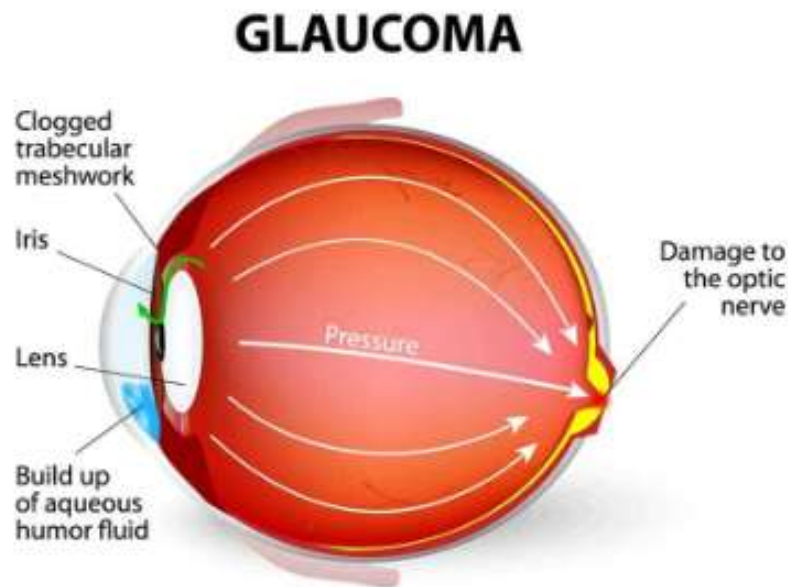


Canaloplasty for Glaucoma

Canaloplasty uses a microcatheter or tube placed in the Canal of Schlemm to enlarge the drainage canal, thus relieving pressure inside the eye. It is a useful surgical option for patients with open angle glaucoma. It is particularly effective for patients with a high risk of infection or bleeding or those who have had complications with other procedures. Patients who wear contact lenses may also be good candidates. Canaloplasty is a safe and innovative procedure that takes advantage of the conventional drainage system of the eye.



Learn more about the risks, recovery and other expectations at:

<https://www.opthalmologytimes.com/view/the-abcs-of-canaloplasty>

Feel free to ask your Abrams EyeCare surgery coordinator for surgery patient references.