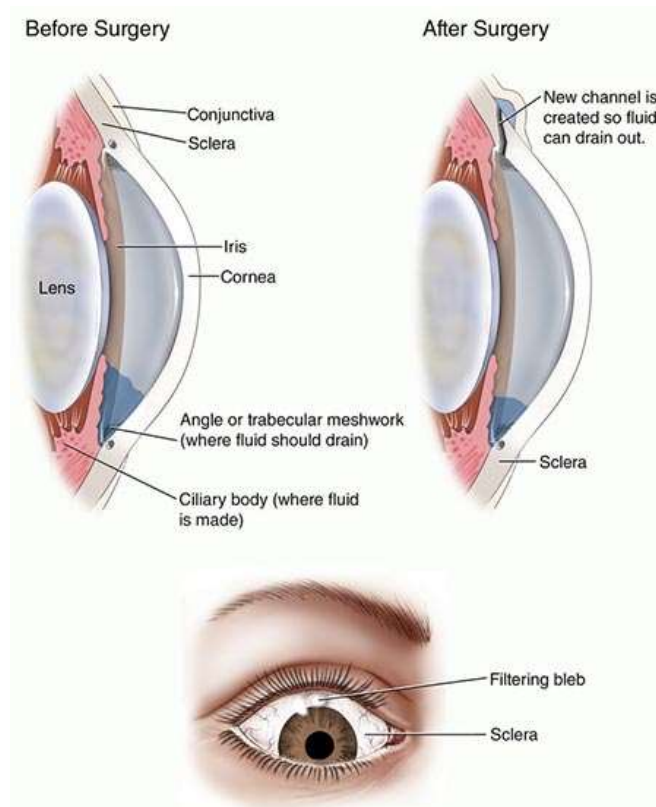


## Trabeculectomy for Glaucoma

Trabeculectomy, also known as glaucoma filter surgery, creates a new pathway to increase the drainage of fluid inside the eye. It is a very common surgical procedure done on an outpatient basis in an operating room. It is used to prevent worsening of vision loss due to glaucoma by lowering eye pressure.

The eye surgeon creates a flap in the sclera — the white part of the eye — underneath the upper eyelid. This creates a system to bypass blocked drainage channels, allows fluid to drain and lower eye pressure. The flap is then placed loosely back down against the sclera to protect the drainage pathway.

This process creates a small blister of fluid, called a bleb, on top of the eye's surface. The bleb is hidden underneath the eyelid and is generally not noticeable to other people. The fluid inside the blister gets absorbed into blood vessels and does not cause excess tearing.



Learn more about the risks, recovery and other expectations at:

<https://www.medicalnewstoday.com/articles/trabeculectomy>

Feel free to ask your Abrams EyeCare surgery coordinator for surgery patient references.